

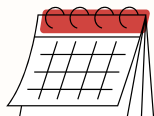


# NURSERY NEWS

Autumn term - NOV / DEC 2025



## Dates for the diary



Weds 17th Dec 2025

Christmas Sing-A-Long and Festive Arts & Crafts - 1PM

Friday 19th Dec 2025

Last day of term

Mon 5th Jan 2026

First day back

## Christmas Sing-A-Long



You will have all received an email inviting you along to watch the children perform in their Christmas sing-a-long on Wednesday 17th December 2025. We are asking parents to arrive for 1pm and you are invited to stay after the show for our Christmas arts & crafts afternoon with the children. Please note, due to limited space, we can only allow a maximum of 2 parents per child.

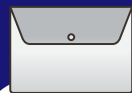
## New Outdoors



We would like to say a MASSIVE Thank you to everyone who has supported our fundraising efforts for our new outdoor area. As you are aware, we have had the new outdoor floor installed during the October half term and the children are enjoying playing outside without getting muddy! We will continue to fundraise throughout the year to be able to purchase new outdoor learning and play equipment which the children will be able to enjoy, especially during the warmer months. We ask for your continued support in fundraising and are forever grateful for all of your sponsors, donations and purchases.

## Autumn Hunt

Our sponsored Autumn Hunt this year raised a fantastic £337. We loved seeing what the children had collected and hope you enjoyed taking part!



**REMINDER**

## COMMS FOLDERS

Please can you ensure your child's communications folder comes in with them for EVERY session. This is our way of passing home important information from Blues.

If you have lost your folder, please email [admin@bluespreschool.co.uk](mailto:admin@bluespreschool.co.uk)

## Christmas Raffle

**RAFFLE**

You should have all received your raffle tickets which were sent home last week. Please can you ensure all raffle ticket sales and forms are returned/received by Monday 15<sup>th</sup> December. If you are able to help with prize donations, we are happy to accept donations in the form of gift cards/vouchers, chocolates, alcohol, biscuits & unopened/unused gifts/toys.

Please bring any donations to drop off and pick up.

As always, Thank you for your support!

The Blues Preschool Nursery, Cox's Gardens, Bishop's Stortford, CM23 3GX

Tel: 01279 755422 Web: [www.bluespreschool.co.uk](http://www.bluespreschool.co.uk)

REGISTERED CHARITABLE INCORPORATION No. 1156613

# Reminders

## WEATHER

During these colder months, we are reminding parents to ensure your child attends their session with a suitable outdoor coat as they will be outside during each session.

Children are able to bring named water bottles which are readily available throughout their sessions should they wish to rehydrate. We ask that these are filled with WATER ONLY, as we are required to promote healthy eating.

## CLOTHING

Always make sure your child wears suitable clothing as the weather is changing and outdoor play will be offered everyday. Wellies are ideal as our grass gets very muddy.

Please ensure your child has 2 changes of clothes in case they get messy, wet or fall during play sessions.

All children must have a pair of black plimsolls which are required for health & safety to avoid any incidents with fingers and toes and for safety within the building.

Please ensure your child's belongings are labelled to avoid items being misplaced or lost.

## CAR PARK

Parking at Blues is limited (6 spaces). Please be mindful of our neighbours and do not park in Cox's Gardens. There is parking along Elizabeth Road which is a short walking distance to Blues. Please be mindful of other families entering and leaving the premises.

Disabled Space - We have a few families who require the use of this space; we ask that you please only use it if you have a valid Blue Badge and ensure it is on display when parking your car.

**PLEASE DO NOT PARK ON THE PAVED AREA OR GRASS VERGES AS THIS IS COUNCIL PROPERTY AND WE ARE LIABLE TO PAY FOR ANY DAMAGES.**

## DETAILS & ABSENCES

Please let us know if you change your contact details. It is imperative that we have your up-to-date details in the event of an emergency.

If your child is not feeling well we ask that you please keep them at home to reduce the spread of any infections that are doing the rounds. This helps to protect all of our families and the staff team.

Please inform Blues staff of any absences. As a setting we are required to note absences as part of our Safeguarding Children and Families Policy. We need to know you are all safe.

## CONTACT

If you have anything you would like to discuss we are always here to listen and help in any way we can. Please do contact Jordan at [manager@bluespreschool.co.uk](mailto:manager@bluespreschool.co.uk)